

# Surface Mount Frequency Mixer

## ADE-1+

### Level 7 (LO Power +7 dBm) 0.5 to 500 MHz



CASE STYLE: CD636

#### Maximum Ratings

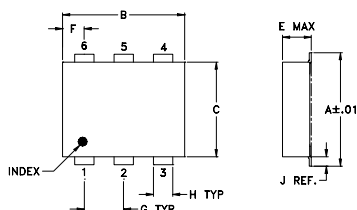
|                       |                |
|-----------------------|----------------|
| Operating Temperature | -40°C to 85°C  |
| Storage Temperature   | -55°C to 100°C |
| RF Power              | 50mW           |
| IF Current            | 40mA           |

Permanent damage may occur if any of these limits are exceeded. These electrical ratings are not intended for continuous normal operation.

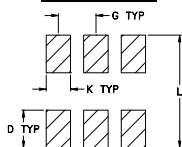
#### Pin Connections

|        |       |
|--------|-------|
| LO     | 6     |
| RF     | 3     |
| IF     | 2     |
| GROUND | 1,4,5 |

#### Outline Drawing



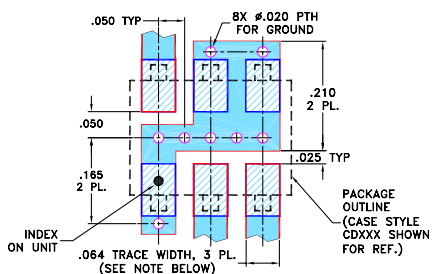
#### PCB Land Pattern



Suggested Layout,  
Tolerance to be within ±.002

#### Outline Dimensions (inch/mm)

|      |      |      |      |      |       |      |
|------|------|------|------|------|-------|------|
| A    | B    | C    | D    | E    | F     | G    |
| .272 | .310 | .220 | .100 | .162 | .055  | .100 |
| 6.91 | 7.87 | 5.59 | 2.54 | 4.11 | 1.40  | 2.54 |
| H    | J    | K    | L    |      | wt    |      |
| .030 | .026 | .065 | .300 |      | grams |      |
| 0.76 | 0.66 | 1.65 | 7.62 |      | 0.25  |      |



NOTES: 1. TRACE WIDTH IS SHOWN FOR ROGERS RO4350B WITH DIELECTRIC THICKNESS .030" ± .002"; COPPER: 1/2 OZ. EACH SIDE. FOR OTHER MATERIALS TRACE WIDTH MAY NEED TO BE MODIFIED.  
2. BOTTOM SIDE OF THE PCB IS CONTINUOUS GROUND PLANE.

- DENOTES PCB COPPER LAYOUT WITH SMOBC (SOLDER MASK OVER BARE COPPER)
- DENOTES COPPER LAND PATTERN FREE OF SOLDER MASK

#### Notes

A. Performance and quality attributes and conditions not expressly stated in this specification document are intended to be excluded and do not form a part of this specification document.  
B. Electrical specifications and performance data contained in this specification document are based on Mini-Circuit's applicable established test performance criteria and measurement instructions.  
C. The parts covered by this specification document are subject to Mini-Circuit's standard limited warranty and terms and conditions (collectively, "Standard Terms"); Purchasers of this part are entitled to the rights and benefits contained therein. For a full statement of the Standard Terms and the exclusive rights and remedies thereunder, please visit Mini-Circuit's website at [www.minicircuits.com/MCLStore/terms.jsp](http://www.minicircuits.com/MCLStore/terms.jsp)

#### Features

- low conversion loss, 5.0 dB typ.
- excellent L-R isolation, 55 dB typ.
- excellent IP3, 15 dBm typ.
- low profile package
- aqueous washable
- protected by US patent 6,133,525

#### Applications

- VHF/UHF

**+RoHS Compliant**  
The +Suffix identifies RoHS Compliance. See our web site for RoHS Compliance methodologies and qualifications

Available Tape and Reel at no extra cost

|           |                       |
|-----------|-----------------------|
| Reel Size | Devices/Reel          |
| 7"        | 20, 50, 100, 200, 500 |
| 13"       | 500, 1000             |

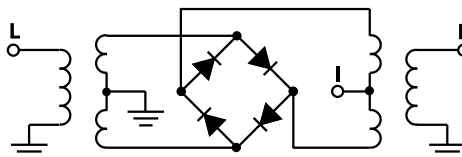
#### Electrical Specifications

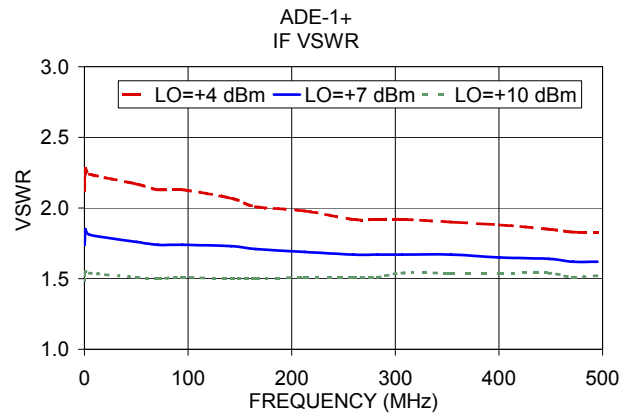
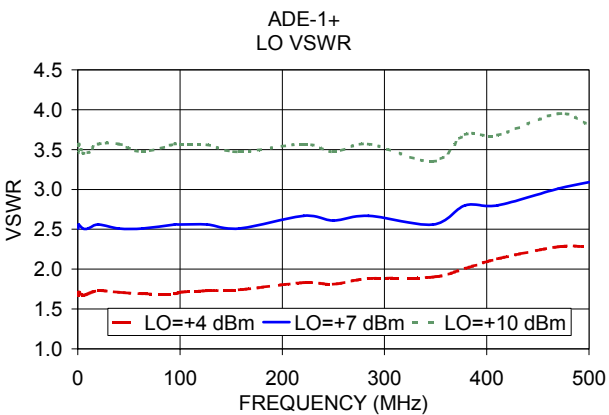
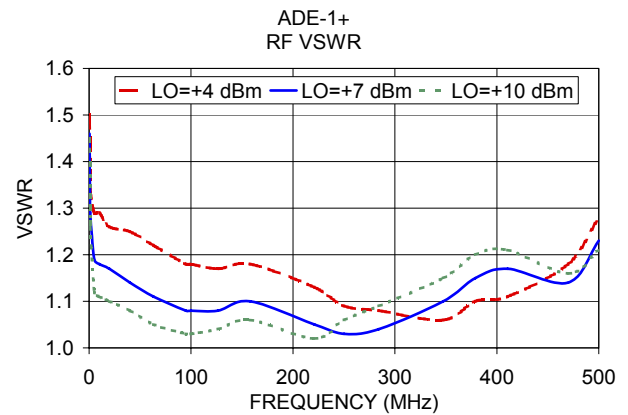
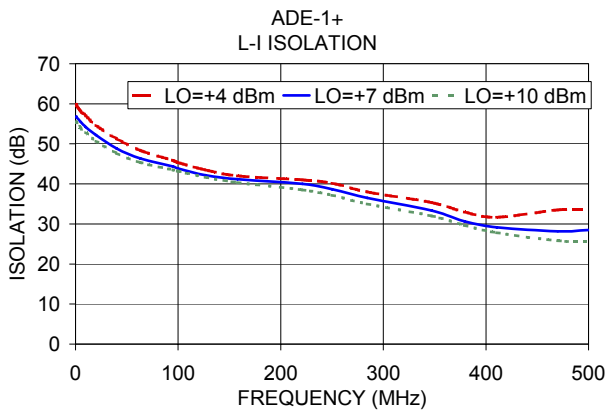
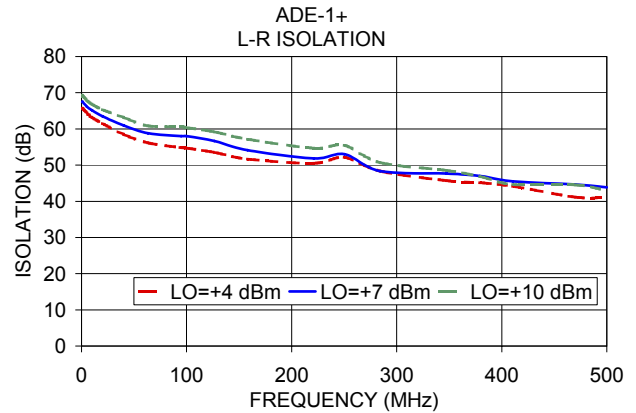
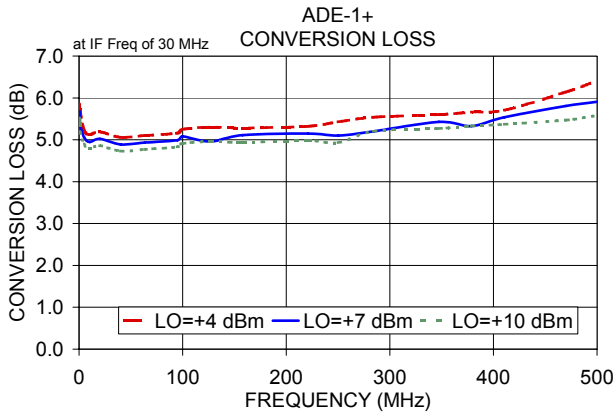
| FREQUENCY (MHz)         | CONVERSION LOSS (dB)    | LO-RF ISOLATION (dB)  |      |      | LO-IF ISOLATION (dB)                 |      |      | IP3 at center band (dBm)             |
|-------------------------|-------------------------|---|------|------|--------------------------------------|------|------|--------------------------------------|
|                         |                         | L   | M    | U    | L                                    | M    | U    |                                      |
| LO/RF                   | Mid-Band                |   |      |      |                                      |      |      |                                      |
| IF                      | Total Range             |   |      |      |                                      |      |      |                                      |
| $f_L$ - $f_U$           | $\bar{X}$ $\sigma$ Max. | Typ.  | Min. | Typ. | Min.                                 | Typ. | Min. | Typ.                                 |
| 0.5-500                 | DC-500                  | 70  | 50   | 55   | 35                                   | 45   | 30   | 65                                   |
| 1 dB COMP.: +1 dBm typ. |                         | L = low range [ $f_L$ to 10 $f_L$ ]<br>m = mid band [ $2f_L$ to $f_U/2$ ] |      |      | M = mid range [10 $f_L$ to $f_U/2$ ] |      |      | U = upper range [ $f_U/2$ to $f_U$ ] |

#### Typical Performance Data

| Frequency (MHz) |        | Conversion Loss (dB) | Isolation L-R (dB) | Isolation L-I (dB) | VSWR RF Port (:1) | VSWR LO Port (:1) |
|-----------------|--------|----------------------|--------------------|--------------------|-------------------|-------------------|
| RF              | LO     | LO +7dBm             | LO +7dBm           | LO +7dBm           | LO +7dBm          | LO +7dBm          |
| 0.50            | 30.50  | 5.68                 | 67.49              | 56.67              | 1.46              | 2.51              |
| 0.80            | 30.80  | 5.55                 | 67.50              | 56.83              | 1.32              | 2.56              |
| 1.00            | 31.00  | 5.35                 | 67.51              | 56.67              | 1.29              | 2.56              |
| 5.00            | 35.00  | 5.06                 | 66.17              | 55.50              | 1.19              | 2.51              |
| 10.00           | 40.00  | 4.95                 | 65.17              | 54.17              | 1.18              | 2.51              |
| 20.00           | 50.00  | 5.02                 | 63.50              | 52.17              | 1.17              | 2.56              |
| 40.00           | 70.00  | 4.89                 | 61.00              | 48.83              | 1.14              | 2.51              |
| 63.25           | 93.25  | 4.93                 | 58.84              | 46.33              | 1.11              | 2.51              |
| 94.82           | 124.82 | 4.99                 | 58.00              | 44.34              | 1.08              | 2.56              |
| 100.00          | 130.00 | 5.08                 | 58.00              | 43.84              | 1.08              | 2.56              |
| 126.39          | 156.39 | 4.96                 | 56.67              | 42.17              | 1.08              | 2.56              |
| 157.97          | 187.97 | 5.11                 | 54.16              | 41.16              | 1.10              | 2.51              |
| 221.12          | 251.12 | 5.15                 | 51.84              | 40.00              | 1.05              | 2.67              |
| 250.00          | 280.00 | 5.10                 | 53.00              | 38.67              | 1.03              | 2.61              |
| 284.26          | 314.26 | 5.20                 | 48.33              | 36.50              | 1.04              | 2.67              |
| 347.41          | 377.41 | 5.43                 | 47.66              | 33.34              | 1.10              | 2.56              |
| 378.98          | 408.98 | 5.33                 | 47.00              | 30.67              | 1.15              | 2.80              |
| 410.56          | 440.56 | 5.54                 | 45.50              | 29.17              | 1.17              | 2.80              |
| 470.00          | 500.00 | 5.81                 | 44.67              | 28.16              | 1.14              | 3.01              |
| 500.00          | 530.00 | 5.91                 | 43.82              | 28.50              | 1.23              | 3.09              |

#### Electrical Schematic





**Notes**

- A. Performance and quality attributes and conditions not expressly stated in this specification document are intended to be excluded and do not form a part of this specification document.
- B. Electrical specifications and performance data contained in this specification document are based on Mini-Circuit's applicable established test performance criteria and measurement instructions.
- C. The parts covered by this specification document are subject to Mini-Circuits standard limited warranty and terms and conditions (collectively, "Standard Terms"); Purchasers of this part are entitled to the rights and benefits contained therein. For a full statement of the Standard Terms and the exclusive rights and remedies thereunder, please visit Mini-Circuits' website at [www.minicircuits.com/MCLStore/terms.jsp](http://www.minicircuits.com/MCLStore/terms.jsp)



# Mouser Electronics

Authorized Distributor

Click to View Pricing, Inventory, Delivery & Lifecycle Information:

[Mini-Circuits:](#)

[ADE-1+](#)